

As described in the Benthic Macroinvertebrate section of the report, we determined diversity and Hilsenhoff Biotic Index (HBI) for all sites. This document provides additional data for the following:

1. The 2016, 2018, and 2019 diversity and HBI scores for Left Hand Watershed sites, including Left Hand Creek and James Creek (Figure 1; Figure 2).

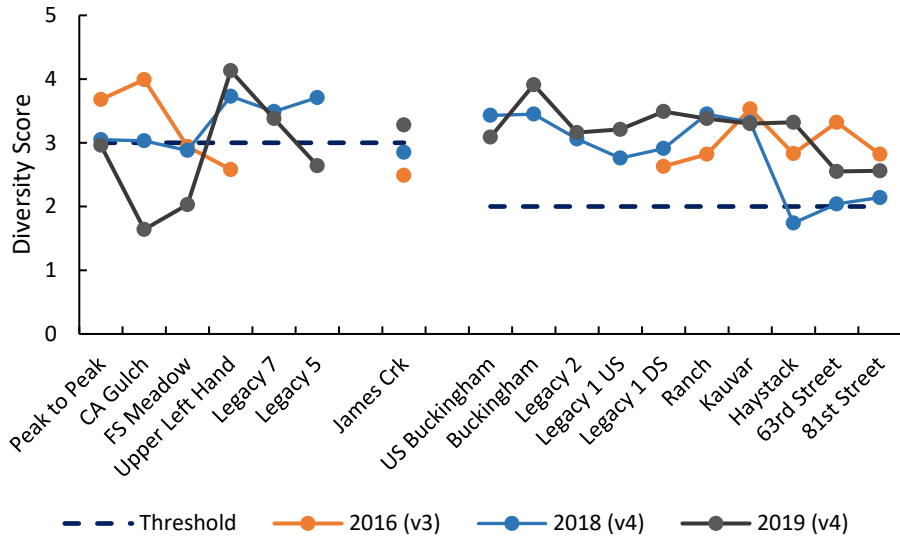


Figure 1. Diversity scores from 2016, 2018, and 2019 at sites on Left Hand Creek and James Creek. Short dotted line indicates impairment threshold for Biotypes 1 and 2. Scores below threshold are impaired. MMI versions (3 or 4) used to calculate diversity scores are noted next to each sampling year.

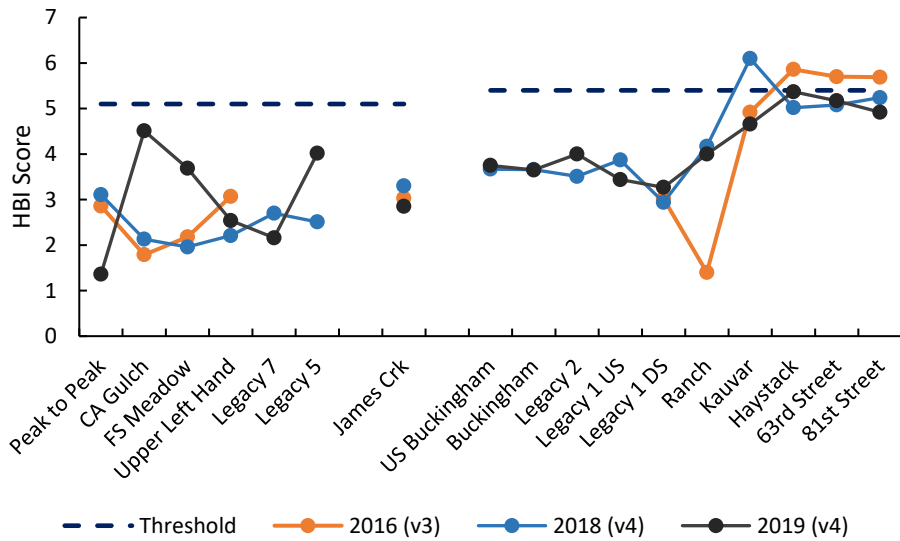


Figure 2. HBI scores from 2016, 2018, and 2019 at sites on Left Hand Creek and James Creek. Short dotted line indicates impairment threshold for Biotypes 1 and 2. Scores above threshold are impaired. MMI versions (3 or 4) used to calculate HBI scores are noted next to each sampling year.